

**CT DEEP** **2016**  
**FISHING REPORT NUMBER 26**  
**10/07/2016**



Blackfish / Tautog (*Tautoga onitis*)



YOU CAN FIND US DIRECTLY ON FACEBOOK. This page features a variety of information on fishing, hunting, and wildlife watching in Connecticut. The address is [www.facebook.com/CTFishandWildlife](https://www.facebook.com/CTFishandWildlife).



## INLAND REPORT

**Fall Stocking of Trout and Broodstock Atlantic Salmon:** Conditions (especially water temperatures) are improving slowly allowing for trout and salmon to be stocked on a case-by-case basis (hopefully widespread stocking soon). We are monitoring conditions in your favorite lakes, ponds, rivers, and streams. As soon as we can get the fish out – we will. This week we were able to stock some of our Trout Parks (Black Rock, Thomaston, Wharton Brook, Wallingford, Great Hollow, Monroe, Mohegan Park Pond, Norwich, Schreeder Pond, Killingworth, Valley Falls Park Pond, Vernon, and Day Pond, Colchester.)

Stay tuned to our Facebook page for daily stocking updates. This week 1,000 Atlantic Salmon were stocked –see “Lakes and Ponds.”

**LARGEMOUTH BASS** fishing is reported as fair to good. Places to try include East Twin Lake, Wononskopomuc Lake, Burr Pond, Hatch Pond, Tyler Lake, Congamond Lakes, Candlewood Lake, Lake Housatonic, Lake Lillinonah, Highland Lake, Bantam Lake, Lake Saltonstall, Winchester Lake, Billings Lake, Stateline Pond, Griggs Pond, Dog Pond, Bigelow Pond, Stillwater Lake, Halls Pond, Quaddick Reservoir, Silver Lake (Meriden), Red Cedar Lake and Mudge Pond.

**Tournament angler** no report this week.

**SMALLMOUTH BASS** action reported at West Hill Pond, Bantam Lake, Candlewood Lake and Highland Lake. River smallies are providing some action on the Housatonic River (Upper), Quinebaug River and Naugatuck River.

**Tournament angler** no report this week.

**NORTHERN PIKE** catches seem to be slowing a bit with the overcast weather, good fishing can be found in Pachaug Pond, Quaddick Reservoir and the CT and Housatonic Rivers.

**BLACK CRAPPIE** fishing is picking up with reports of fish coming from Burr Pond, Roseland Lake, Lake Lillinonah, and Park Pond.

Share the Experience—Take Someone Fishing • APRIL 9 Opening Day Trout Fishing

2016 CONNECTICUT

# ANGLER'S GUIDE

INLAND & MARINE FISHING

## YOUR SOURCE

For CT Fishing Information

» New Marine Regulations for 2016  
See page 58

CONNECTICUT BUREAU OF NATURAL RESOURCES  
1866 - 2016

Connecticut Department of Energy & Environmental Protection  
[www.ct.gov/deep/fishing](http://www.ct.gov/deep/fishing)

Less than a month left to get your best “shot” into the Angler’s Guide Cover contest. Email your high quality photo to:  
[deep.inland.fisheries@ct.gov](mailto:deep.inland.fisheries@ct.gov) by November 1.

**CARP-** The Connecticut River CARP Tournament is coming- <http://www.carptournamentseries.com/site/>

**WALLEYE-** Look for deep drop offs and structure. For some action try Squantz Pond, Batterson Park Pond, Beach Pond, Lake Saltonstall, West Thompson Reservoir, Saugatuck Reservoir or Lake Zoar.

**PANFISH** are still providing excellent action throughout the state. Use worms, grubs, jigs or small poppers for them. Small local ponds are often great places, for larger waters try include Dog Pond, Mohawk Pond, Miller Pond, Gorton Pond, Lake Hayward, Babcock Pond, Bishop Swamp Pond, Griggs Pond, Tyler Pond, Crescent Pond, Red Cedar Lake and Long Pond.

**TROUT- FALL TROUT STOCKING UPDATE:** Conditions are improving slowly allowing for some trout to be stocked on a case-by-case basis (hopefully widespread stocking may be possible soon). Stay tuned to our Facebook page and website for daily stocking updates.

**RIVERS & STREAMS** - Conditions are starting to improve. Temperatures are dropping, but the lack of significant rain continues to keep many streams near record low flow levels (see stream flow graphic on page).

**Farmington River** – Fishing continues to be good and the conditions for this weekend should be good. West Branch flows are clear and low, currently 60 CFS at Riverton with the Still River adding a mere 6.9 CFS, and water temperatures are in the low 60's °F.

**Hatches/patterns** include Tricos (#20-26), *Isonychia bicolor* (#10-14, fast water, afternoon/evening), Blue Wing Olives (*Drunella* & *Baetis* spp., #18, 20-24, mid-late afternoon), Cahill (#12-14), White Fly (#12-14; just after dark), Needhami, Caddis (tan #16-20, all day; green #20-22, evening; summer pupa #18-20 morning), Midges (#22-32, morning), Black Ants (#16-18, mid-day in fast water), Black Beetles (#16-18, mid-day), Flying Ants (#22-24, mid-day, when windy/humid), and Stone Hopper (#10-12, mid-day).

*Colebrook River Reservoir on Sunday 10/1/2016. The photo was taken just about at the midpoint of the lake. An old bridge can be seen in the lower right of the photo.*

**Housatonic River** – with the addition of 4,100 "Survivor" Browns (3,100 10-12 inch fish and 1,000 12+ inch



fish) in the Cornwall section of the Housatonic River Trout Management Area last week, fishing continues to be very good. Flows are very low, clear and easily wadeable, currently 96 CFS at Falls Village and 146 CFS at Gaylordsville). Morning water temperatures are currently in the upper 50's °F.

The area between the Route 4 Bridge and Route 341 Bridge is still offering great fishing with smallmouth and fallfish eagerly hitting a variety of poppers, dry flies, nymphs, and streamers. Patterns to try include White Zonkers, Wooly Buggers (go big- larval dobsonflies can be up to 4" in length and are a favorite food item), Muddlers, Grey or Black Ghosts (#4-10). Other insects include Fall Sulfurs (#16-18), Blue Wing Olives (#18-22), Tricos (#20-22), Leadwing Coachman (#10-12 evening, September is peak month), Sulfurs duns (#16-18, below the dam due to low temperatures, morning; afternoon to early evening for spinners), Light Cahill and Black caddis (#14-18, early morning & evening). Golden stonefly nymphs hatch at first light and

adults egg-lay after dark. Try nymphing the pockets, deeper riffles and pool heads and don't forget streamers (morning & evening).

**TROUT-LAKES & PONDS** - Trout Parks (Black Rock, Thomaston, Wharton Brook, Wallingford, Great Hollow, Monroe, Mohegan Park Pond, Norwich, Schreeder Pond, Killingworth, Valley Falls Park Pond, Vernon, and Day Pond, Colchester) were stocked with 300 Rainbow Trout each. These fish are very nice size at about 1 pound each. Please remember that the daily limit is 2 fish per person per DAY,

**BROODSTOCK ATLANTIC SALMON:** 500 fish were stocked into each of the following; Mount Tom Pond and Crystal Lake (Ellington). The daily limit in lakes and ponds is 1 fish per angler. Stocking of the Naugatuck and Shetucket Rivers is on hold until the water level increases.

### CONNECTICUT RIVER

The River remains very low (making fishing in some places very difficult). Results from an electrofishing survey conducted this week indicate that the fishery in the Haddam section is ROBUST, lots of slab CRAPPIE, Big BOWFIN, and good numbers of PIKE and BASS. Fish the weedlines for big predators. **BLACK CRAPPIE** action is improving in the coves up and down the river. Target the backwaters with small shiners, silver grubs, or small Rapalas. **SMALLMOUTH BASS** have been reported as hit or miss in from Hartford upstream. **NORTHERN PIKE** fishing is reported as good in the main stem and coves. Fish have been caught from the Hartford area downstream to Chapman Pond. **LARGEMOUTH BASS** are being caught (also hit or miss) in the Hartford to Haddam area. **CARP** are providing action in coves and in the mainstem (Hartford to Middletown area). Fishing for the CARP tournament will begin on October 10. Get out and support your fellow CARP-ers.

### NOTES & NOTICES:

**BASHAN LAKE (drawdown).** Bashan Lake remains drawn down (slow refill continues – lake currently remains down approximately 4-5 feet – note that refill rate is dependent on rainfall amounts) following dam repairs and the state boat launch remains closed.

**BRANFORD RIVER (boat launch).** The Branford River state boat launch is currently closed for renovations. This closure is currently expected to last to November 14, 2016. Alternative nearby launch sites include the Guilford Town boat launch and the East River State boat launch, both in Guilford.

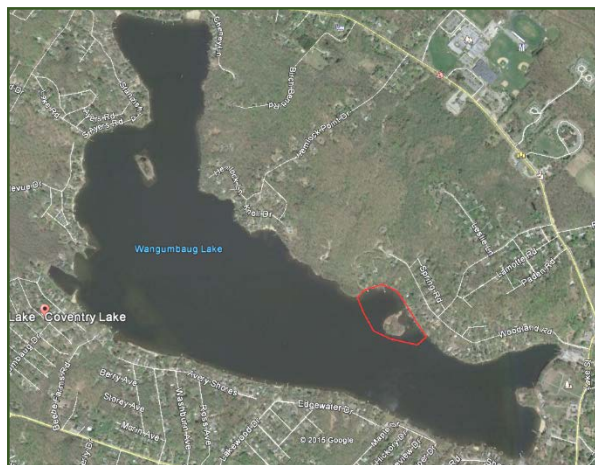
**COLEBROOK RIVER LAKE (boat launch).** Due to low water levels the **regular boat launch at Colebrook River Lake is closed**, however, an alternate location to launch from is available and can be used. Boaters should use extra care when launching and when out on the lake (remember that submerged objects such as tree stumps and rocks are much closer to the surface due to water levels). Boaters can call the U.S. Army Corps of Engineers (USACE) at 860-379-8234 for updated information.

**CONNECTICUT RIVER (invasive species alert).** Hydrilla was recently found in the main stem Connecticut River in Glastonbury (near Glastonbury's riverfront Park & Boathouse). See the Coventry Lake entry below for what river users should do to prevent spread of this invasive plant to other waterbodies.



**COVENTRY LAKE (invasive species alert).** Hydrilla, a very highly invasive aquatic plant, has been found growing in Coventry Lake. All lake users should take extra care to check and clean their boats (including canoes, kayaks and rowing sculls), trailers, and fishing equipment before leaving the boat launch, or leaving the lakeshore.

*Coventry Lake (Wangumbaug Lake) boaters should avoid the area outlined in red to avoid fragmenting and spreading hydrilla. This is only area in the lake where hydrilla has been found.*



**DOOLEY POND (drawdown).** A drawdown of Dooley Pond to facilitate dam repairs is ongoing (repairs are done, but refill rate will be dependent on rainfall). The state boat launch is currently closed.

**GLASGO POND (drawdown).** A drawdown of Glasgo Pond to facilitate dam repairs is ongoing (began September 2015). Launching of boats is difficult to impossible.

**HANOVER POND (drawdown).** A 6-foot drawdown of Hannover Pond (Quinnipiac River, Meriden) began on September 13 for the purposes of installing a small hydropower facility. The drawdown is likely to extend through the upcoming winter months. This pond has extensive shallow areas that are now exposed.

**LAKE HOUSATONIC (rowing regatta).** The "Head of the Housatonic" Regatta is scheduled for **Saturday, October 8<sup>th</sup> from 8 am to 6 pm, with course setup occurring on Friday, October 7<sup>th</sup>.** Although this event will be using the boat launch in Indian Well State Park, room will be available to the general public to launch. Boaters should however use additional caution on the lake.

**CT FISHIN' TIPS** is our monthly e-newsletter dedicated to providing information, tips and pointers about fishing in Connecticut. Get CT Fishin' Tips delivered automatically to your in box by subscribing at [www.ct.gov/deep/newslettersubscription](http://www.ct.gov/deep/newslettersubscription)

**NEW!** Youth Fishing Passport [Fishing Challenge Scorecard](http://www.ct.gov/deep/yfp): Download the new scorecard for your Youth Fishing Passport Holder on the program web page at [www.ct.gov/deep/yfp](http://www.ct.gov/deep/yfp). Top anglers will receive a great prize pack of fishing gear.

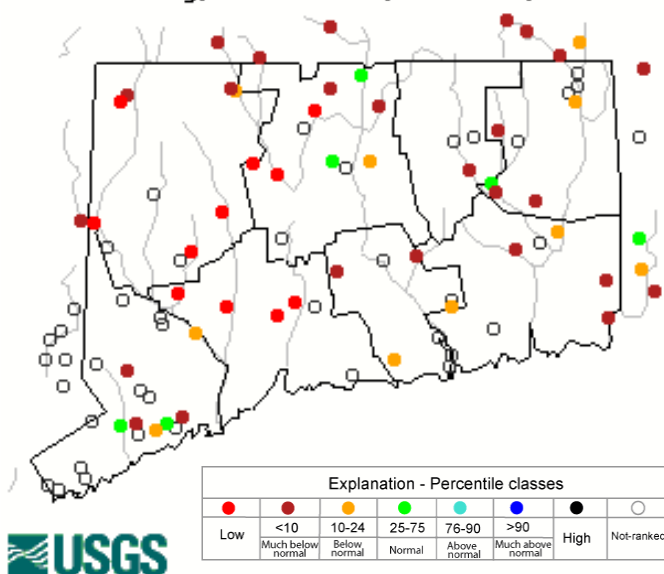
**¡VOMONAS A PESCAR!** Información disponible en español relacionada con la pesca en Connecticut.

Los folletos de la pesca en [aguas dulces](#) y [aguas saladas](#) fueron traducidos en español para la distribución a la comunidad hispana residentes en Connecticut. El objetivo de los folletos de pesca en español es para ayudar a fomentar, aumentar y promover la participación hispana en esta actividad que se lleva acabo en familia.

Somos afortunados en Connecticut por el gran abastecimiento de peses . La población de Connecticut tiene oportunidad de pescar a no más de 5 millas de su residencia. Si a usted le gusta la Trucha, Lobina, Lucio Norteamericano, Panfish o especies de aguas saladas como Lobina Rayada, Summer Flounder, Porgy o Anjova, las aguas de Connecticut lo ofrecen. ¡Vamonos a Pescar!

## Stream flow

Thursday, October 06, 2016 13:30ET



Data in the state graphic to the left are generated by the United States Geologic Survey (USGS) and are available on line at: <http://waterdata.usgs.gov/ct/nwis/rt>. A percentile is a value on a scale of one hundred that indicates the percent of data in the data set equal to or below it. For example streamflow greater than the 75<sup>th</sup> percentile means only ¼ of the streamflow values were above the value and thus would be considered "above normal". Stream flow between the 25<sup>th</sup> and 50<sup>th</sup> are considered to be "normal flows" and those 25<sup>th</sup> or less are considered to be "below normal".

## MARINE FISHING REPORT



Please refer to page 64 of the [2016 CT Angler's Guide](#) for [Connecticut Tides](#).

### [2016 CT Marine Recreational Fishing Regulations](#)

To find a saltwater shore fishing spot close to where you live, go to the following website: <http://www.lisrc.uconn.edu/coastalaccess/>.

For [Enhanced Opportunity Shore Fishing](#) sites and other fishing information including a site map: go to the following website <http://www.depdata.ct.gov/maps/saltwaterfish/map.htm>.

### [Connecticut State Boundary Line in Long Island Sound](#).

**Anglers please note:** Though Connecticut has reciprocity with neighboring states (New York, Rhode Island, Maine and Massachusetts), residents of Connecticut are required to have a CT Resident Marine Waters Sport Fishing License to fish in the Marine District.

### [See a Tangled Turtle? Call the Hotline! 1-860-572-5955 ext. 107](#)

This is the time of year when leatherback, loggerhead, green, and Kemp's ridley sea turtles return to northern waters, with many sightings around Long Island Sound.

### [WHALE WATCHING GUIDELINES](#).

**Please note:** All marine mammals are protected by the Federal Marine Mammal Protection Act. Following these recommended operational guidelines helps minimize chances of harassing or injuring whales and violating Federal law. Guidelines apply to all large whales from Maine through Virginia, except North Atlantic right whales. It is illegal to approach a right whale within 500 yards (1500 feet) unless granted specific exemption or authorization.

**Fish Rules App** *Fish Rules is a totally new and innovative way to understand recreational saltwater fishing regulations for state and federal waters from Maine to Texas.*

*Saltwater fishing regulations made easy!*

Smart phones have GPS capabilities, allowing you (anglers) to know when they are in NY versus Connecticut or Rhode Island State Fishing Waters. Free download.

### **REMINDER TO ANGLERS: TAUTOG (BLACKFISH) SEASON OPENS THIS MONDAY, OCTOBER 10<sup>TH</sup>!**

**TAUTOG (Blackfish).** Any of the rocky reefs, rock piles, and wrecks in LIS will hold tog. Green, Asian or Hermit Crabs will work. Consider putting the crab (bait) on a jig (1/4 to 1 ounce). It will be a shallow water bite (6-30 feet). I would highly recommend planning a trip on a party/charter boat trip to fish for tautogs.

**STRIPED BASS** fishing is fantastic. It's time for shore anglers to hit the SURF...coastal state parks. The fall season appears to be starting off strong, with many charter boat operators commenting on how many large bass there are. These bass are migrating and feeding heavily on all the bait. The best thing is...you catch them during the daytime, especially under overcast skies. Trolling weighted jigs (Chartreuse) with a yellow pork rind and or live lining bunker (Atlantic menhaden) in 15 to 40 feet of water. I like dunking a live eel on the reefs/shoal areas during the late afternoon /evening hours. This technique has produces some very big bass recently (52 inches – 48 pounds, (Outer Bartlett Reef/Norwalk Islands). Striper spots include the Watch Hill reefs, Ram Island Reef in Fishers Island Sound, lower Mystic and Thames River, the Race, Sluiceway, Plum Gut, Pigeon Rip, outer Bartlett Reef, Black Point, the "humps" south of Hatchett Reef, lower Connecticut River, Long Sand Shoal, Cornfield Point, Southwest Reef (outer), Sixmile Reef, Falkner Island area, the reefs off Branford, New Haven Harbor (Breakwalls) and the upper reaches, Charles Island area, lower Housatonic River, buoys 18 and 20 off Stratford Point, Stratford Shoal/Middle Ground, Milford Point, Penfield Reef, around the Norwalk Islands, and Cable and Anchor Reef.

**STRIPED BASS ANGLERS FISHING IN RHODE ISLAND WATERS** - are advised that the state of Rhode Island has adopted the following regulations pertaining to striped bass. These regulations apply to all Rhode Island state lands and waters including the waters around Block Island: **"Any person recreationally harvesting a striped bass thirty-four (34) inches or larger shall at the time of harvest have the right pectoral fin removed at a point as close to the body of the fish as possible."**

**BLUEFISH** bite is quite honestly still unbelievable. Throw a top water plug like a Rattlin Popper and hang on. Go out there and catch one of hardest fighting fish in the sea. They can be found throughout the Sound (find the birds). Large numbers of bluefish are cruising the lower estuaries, rivers and beaches feeding on menhaden/anchovies. Bluefish fishing spots include the reefs off Watch Hill, the Race, Thames River, Sluiceway, Plum Gut, Pigeon Rip, lower Connecticut River, Long Sand Shoal, Sixmile Reef, Falkner Island area, New Haven Harbor and upper reaches, lower Housatonic River, buoys 18 and 20 off Stratford Point, Stratford Shoal/Middleground, Penfield Reef, Norwalk Islands and Cable and Anchor Reef. **SNAPPER** fishing is still better in the western sound (Milford to Greenwich) with fish measuring 5 to 12 inches in length.

**BLACK SEA BASS** fishing is very good. Hit every favorite wreck/reef/hump, to find good numbers of these tasty bottom fish. Angler please be careful when releasing sublegal sea bass. There is lots of them out there...let's give them a chance to grow and get big. Eastern Sound (Fishers Island to Block Island and northeast of Montauk) anglers are having better success. For those willing to travel, Block Island Sound is the place to be for humpback sea bass. Closer to home, the rocky reefs from Niantic, to Branford (Falkner Island) and Fishers Island have been consistent all season. A reminder to all anglers...if you are fishing in water deeper than 100', barotrauma can cause released fish to struggle to make it back to the bottom. A descending devise such as the Shelton Fish Descender can help assist the sea bass air bladder to recompress and get safely back down to the depths. See Fishsmart.org for more information.

**SUMMER FLOUNDER** (fluke) fishing is **Closed** in CT

**SCUP** (porgy) fishing is still the best bet in town. All the party boats are targeting them...that's how plentiful they are. Spend time chumming...this will improve your success. Try these nice shore fishing areas (incoming tide better); Morningside, and Woodmont (Milford), Coast Guard Jetty at Southport Beach, Rick Jetty at Calf Pasture beach, South Benson Fishing Pier, Sherwood Island, Pleasure Beach Fishing Pier, St Mary's by the Sea, Gulf Beach Pier, Bonds Dock (Stratford) and Stratford wall along with Long Beach (excellent shore spots). Other shore spots include The Sound School Fishing Pier/Dock, Rocky Neck State Park, Harkness Memorial State Park, Meigs Point, Hammonasset, Sherwood Island State Park, Charles Island and Fort Trumbull State Park. Fish during the high tide at these shore locations. Locate your favorite Enhanced Shore Fishing Opportunities for these hard fighting and excellent eating "Reef Slammers".

**ATLANTIC BONITO & LITTLE TUNNY** fishing is the best it has been in years throughout the sound. Pink is the color of choice. Western sound anglers are scoring using a Hoggy heavy minnow jig in pink. These small tunas are fast movers, quickly moving to different locations to locate them is important. However, the action in CT is heating up and many fish have moved into the central/western Sound. Still some big catches of these small tunas have been reported from Pine Island, Bluff Point, Groton Long Point, Niantic Bay (Jordan Cove) and points west from Milford, Norwalk, Darien and Greenwich Pt. Park. Shore anglers are scoring at Fort Trumbull, mouth of the Thames River, Ocean Beach, Seaside Park, Harkness Memorial, Hammonasset, Rocky Neck State Park and also at Sherwood Island State Park. These small tunas are also cruising around from Pt. Judith, Watch Hill to Bluff Point (including Fishers Island Sound), the Race to Little Gull Island, from Bartlett Reef to Black Point. Dawn and dusk is typically the best time to fish for these inshore tunas but they can be caught during the daytime. They are feeding heavily of young of the year transparent anchovy. Try casting metal (heavy) lures (Swedish pimple, albie snax and Epoxy jigs) to feeding fish on the surface. A quiet approach and finding birds (gulls/terns) actively feeding is the key to a successful trip. Jigging for them also works when they are close to the bottom.

**SCUP(porgy)** fishing remains the best bet in town. All the party boats are targeting them...that's how plentiful they are. Hit the coastal state parks and spend time chumming...this will improve your success. Try these nice shore fishing areas (incoming tide better); Morningside, and Woodmont (Milford), Coast Guard Jetty at Southport Beach, Rick Jetty at Calf Pasture beach, South Benson Fishing Pier, Sherwood Island, Pleasure Beach Fishing Pier, St Mary's by the Sea, Gulf Beach Pier, Bonds Dock (Stratford) and Stratford wall along with Long Beach (excellent shore spots). Other shore spots include The Sound School Fishing Pier/Dock, Rocky Neck State Park, Harkness Memorial State Park, Meigs Point, Hammonasset, Sherwood Island State Park, Charles Island and Fort Trumbull State Park. Locate your favorite Enhanced Shore Fishing Opportunities for these hard fighting and excellent eating "Reef Slammers".

**WEAKFISH** fishing is still good in the central and western sound. Falkner, Goose Island and the Norwalk Island area is producing some very nice "tide runners". Fish up to 33 inches are being reported from West Haven Beaches/Charles Island area to Norwalk.

**HICKORY SHAD** fishing is good in the Black Hall River, Norwalk River and Thames River. Anglers are still waiting for the fall bite to happen elsewhere, especially shore anglers. Fishing remains ok at Fort Trumbull, Black Hall, Clinton Harbor River systems and the lower Connecticut River (DEEP Marine Headquarters fishing pier).

**STRIPED SEA ROBIN** fishing is FANTASTIC. "Poor-Man's Lobster" are found wherever one is fishing for summer flounder (fluke). With many fish measuring over 20 inches and barking up a storm. Shore fishing for them is fantastic. West Haven sand bar and local beaches have been producing

**BLUE CRAB** fishing is slow one day and awesome the next in the tidal creeks/bays/piers. Many of the large "jimmies" are still up river and have not migrated down... Remember...all egg bearing females must be released with unavoidable harm. Minimum carapace length is 5 inches for a hard shell crab. Legal gear types include: scoop (dip) net, hand line, star crab trap, circular (topless) trap not exceeding 26 inches in diameter. Maryland Style Crab traps are prohibited. Chicken with the skin on it (along with a long handle net) and a small circular crab trap is the preferred method to capture these tasty crabs. Blue Crab Fact Sheet

**GOT A FISHING REPORT - PLEASE EMAIL US AT** [deep.marine.fisheries@ct.gov](mailto:deep.marine.fisheries@ct.gov)

**NOTABLE CATCHES:**

Species	Length (in.)	Weight (lb)	Angler
Bluefish	37.5"	C&R	Dean Michael Vogel
Bluefish	36.25"	C&R	Dean Michael Vogel
Summer Flounder	31"	11 lbs. 1 oz.	Jodi Ashmore
Summer Flounder	22"	3 lbs. 2 oz.	Tyshawn Henderson
False Albacore	25.5"	9 lbs. 10 oz.	Jason Mather

---

**[CAUGHT A TROPHY FISH? - TROPHY FISH AWARD PROGRAM AFFIDAVIT link](#)**

---

*For Current Connecticut Recreational Fishing Regulations: Anglers should consult the 2016 Connecticut Anglers Guide which is now available at most Town Clerks Offices, DEEP offices and at tackle stores selling fishing licenses. Current regulations, electronic versions of the Angler's Guide and additional information can all be accessed on the DEEP website at: [www.ct.gov/deep/fishing](http://www.ct.gov/deep/fishing).*

The Connecticut Department of Energy and Environmental Protection is an Affirmative Action/Equal Opportunity Employer that is committed to complying with the requirements of the Americans with Disabilities Act. Please contact us at (860) 418-5910 or [deep.accommodations@ct.gov](mailto:deep.accommodations@ct.gov) if you have a disability and need a communication aid or service; have limited proficiency in English and may need information in another language; or if you wish to file an ADA or Title VI discrimination complaint.

---

**DEEP WEEKLY Fishing Report**



**Connecticut Department of  
ENERGY & ENVIRONMENTAL PROTECTION**

79 Elm Street, Hartford, CT 06106  
[www.ct.gov/deep](http://www.ct.gov/deep)

*Striped Bass image courtesy Duane Raver/USFWS.*